



## ***'Dyna Run V3' Software Install Manual***

[www.dynapro.co.uk](http://www.dynapro.co.uk)

**Dyna Pro Dynamometers Ltd    United Kingdom**  
**Tel UK: +44 (0) 8000 4321 68**  
**Tel Int: +44 (0) 1256 363063**

E-mail [support@dynapro.co.uk](mailto:support@dynapro.co.uk)



## Table Of Contents

<b>INTRODUCTION</b>	<b>1</b>
<b>CONVENTIONS USED IN THIS MANUAL</b>	<b>1</b>
<b>TECHNICAL SUPPORT</b>	<b>1</b>
<b>DYNA RUN V3 SOFTWARE INSTALLATION</b>	<b>2</b>
<b>COMPUTER SPECIFICATIONS</b>	<b>2</b>
<b>SOFTWARE INSTALLATION</b>	<b>2</b>
Installing Dyna Run V3 Application Software	2
Uninstalling Dyna Run V3 Application	5
Anti Virus Tools (Norton, MacAfee, Symantec etc)	5
Dyna View V2 Stand alone Graph Viewing Software	5
Dyna View V2 Customer Install	5
<b>DYNA PRO DRIVER INSTALLATION</b>	<b>6</b>
Installing Dyna Run Drivers	6
Uninstalling Dyna Pro USB Drivers	7
<b>STARTING DYNA RUN V3 FOR THE FIRST TIME</b>	<b>8</b>

## Introduction

Welcome to the Dyna Pro Dynamometers Software Install Manual for Dyna Run V3. Please carefully read the installation instructions for this software before commencing with the actual software install.

## Conventions Used In This Manual

To make reading and understanding this manual more convenient certain naming conventions have been used throughout this publication.

Convention Used	Description
<b>NOTE</b>	The Note icon indicates a special point of notice for the operator.
<b>CAUTION!</b>	The Caution icon indicates a potential hazard to the dynamometer equipment or to the vehicle being tested. Follow all procedures exactly as they are described and use care when performing all procedures.
<b>WARNING!</b>	The Warning icon indicates potential harm to the person performing a procedure and/or the dynamometer equipment.
<i>Italic</i>	Italic hyphenated items are names, processes and menu names.
<b>Bold</b>	Bold Highlighted, items that you can select on within the software, including buttons, menus, check boxes and radio buttons.

## Technical Support

For technical support and assistance please contact Dyna Pro Dynamometers Ltd at +44 (0) 1256 363063 or an appointed agent.

Dyna Pro Dynamometers Ltd can also be contacted by mail at Unit 18, Sherrington Way, Lister Road Industrial Estate, Basingstoke, Hampshire. United Kingdom RG22 4DQ, or visit us on the world wide web at [www.dynapro.co.uk](http://www.dynapro.co.uk), for the latest product release and updates.

# Dyna Run V3 Software Installation

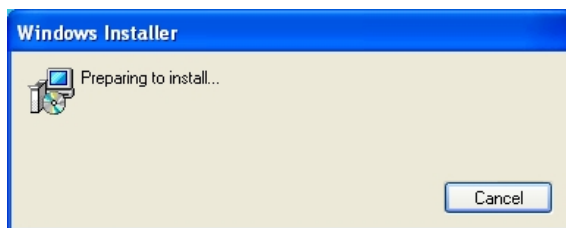
## Computer Specifications

Minimum System Requirement	Recommended System Requirement
• IBM compatible Computer	• IBM compatible Computer
• Microsoft® Windows 2000/XP (Home or Professional)	• Microsoft® Windows 2000/XP (Professional)
• Pentium 1.5 GHz processor (Inertia Machines)	• Pentium 2.4 GHz or faster processor (Inertia Machines)
• Pentium 2.0 GHz or faster processor (LC Machines)	• Pentium 3.0 GHz or faster processor (LC Machines)
• 256 Mb of available Ram	• 256 Mb of available Ram or greater
• 1 Free USB 1.1 Port	• 2 Free USB 2.0 Ports
• 800 x 600, 256 colour monitor (SVGA)	• 1280 x 1024 256 colour monitor (SVGA) or better
• 2 Gigabyte hard drive	• 5 Gigabyte hard drive or better
• 150 MB of available hard-disk space	• 250 MB of available hard-disk space or better
• CD-ROM drive (16x or faster)	• CD/DVD-ROM drive (16x/4x or faster)
• Printer (if hard copy prints required)	• Printer (if hard copy prints required) HP Compatible

## Software Installation

### *Installing Dyna Run V3 Application Software*

1. **DO NOT** connect the USB cable from the computer to the Dynamometer.
2. Insert the CD-ROM disc into your CD-ROM Drive.

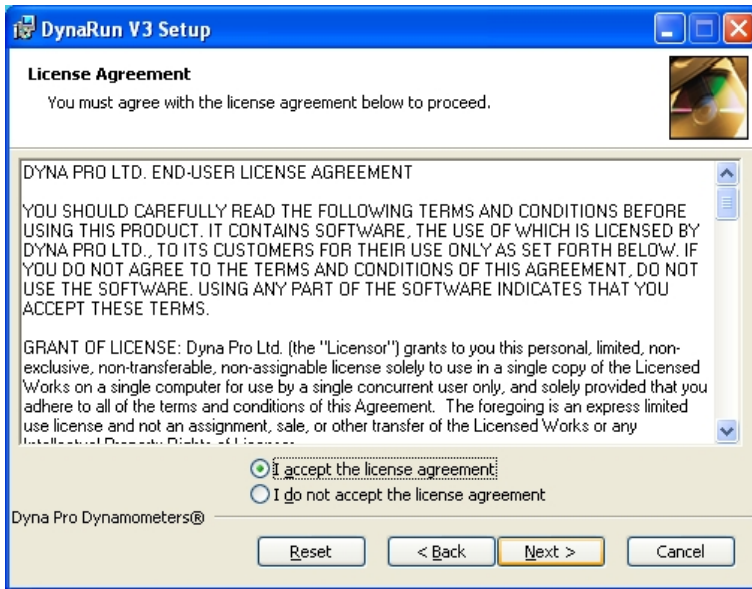


This 'Windows Installer' dialog box will be displayed.

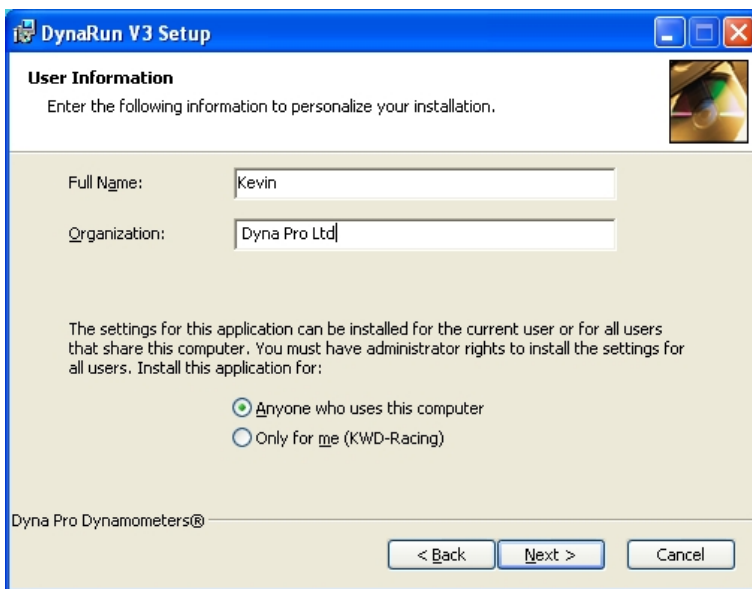
Press **Cancel** if you wish to 'Quit' without installing 'Dyna Run V3'.



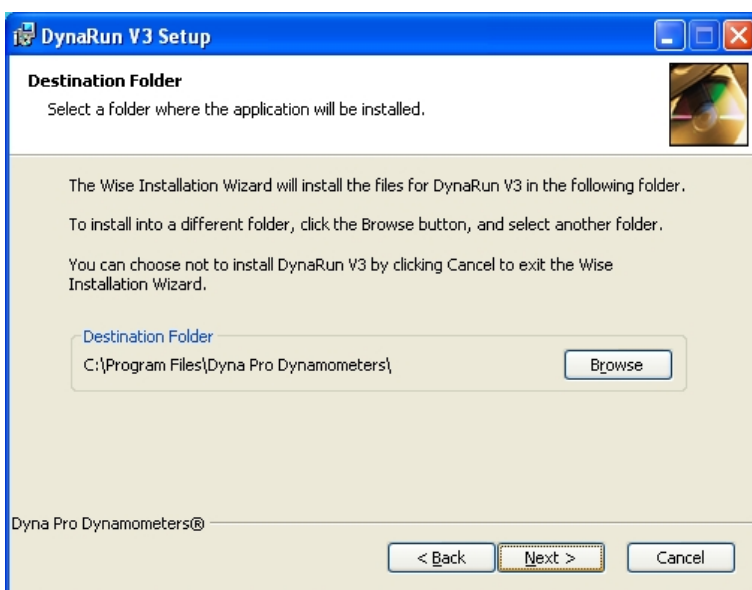
Please read the 'Dyna Run V3 Setup' dialog box and then when ready press the **Next** button.



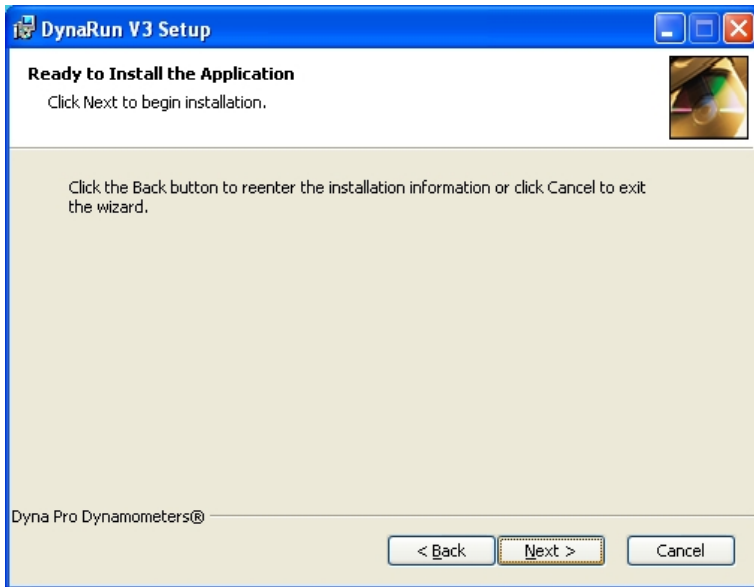
you agree to the *'Licence Agreement'* the select **I accept the licence agreement** radio button, then press **Next** to continue.



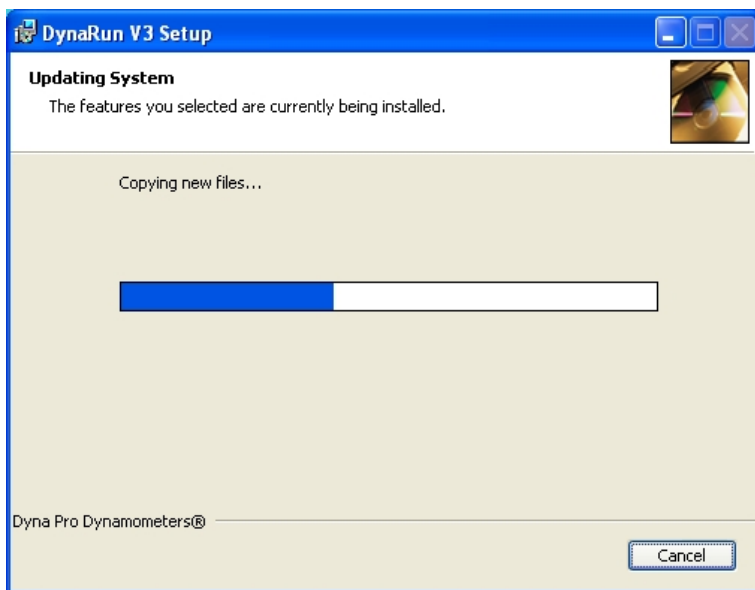
enter your *'Name'* and *'Company Name'* if you wish, insure that **Anyone who uses this computer** radio button is selected, then press **Next** to continue.



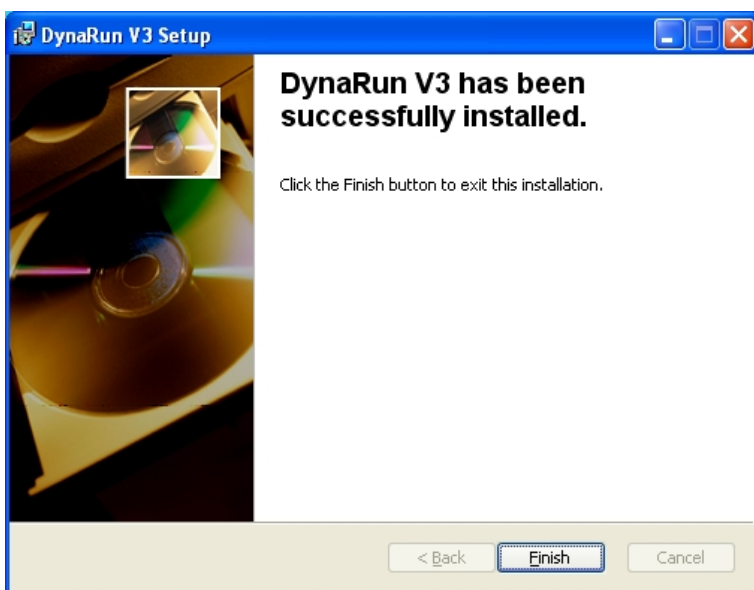
please leave all these settings as defaulted in the dialog box. Press **Next** to continue.



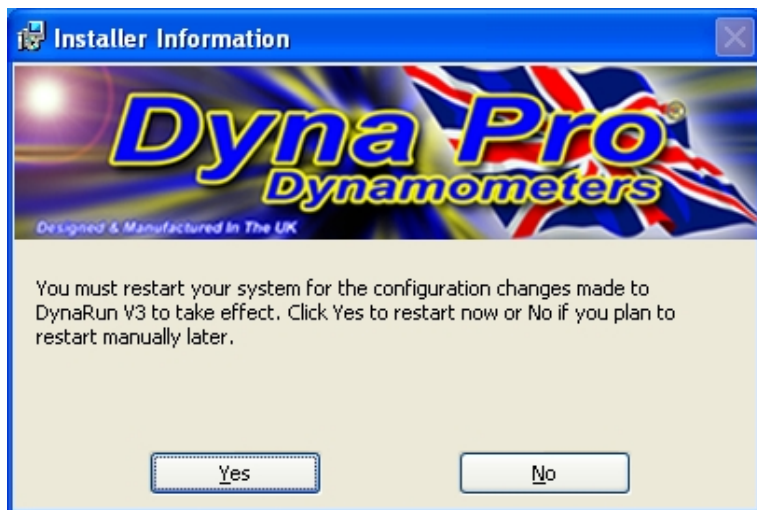
Press the **Next** button to start the *'Dyna Run V3'* installation.



*'Dyna Run V3'* installation will take a few minutes to complete, the *'Progress Bar'* will show you the current status of the installation.



Press **Finish** to complete the installation.



You will be asked to '*Restart*' your system, press **Yes** to restart your computer.

### ***Uninstalling Dyna Run V3 Application***

1. Select **Start**
2. Click **Control Panel**.
3. Look for **Add/Remove Programs** and double-click.
4. Locate '*Dyna Run V3*' and press the **Remove** Button.

### ***Anti Virus Tools (Norton, MacAfee, Symantec etc)***

Some anti-virus software may stop the software from installing, if this is the case please temporarily stop the anti virus service during the install procedure.

For best performance from your Dyna Run V3 software please also remove virus file checking from the '*Dyna Pro Dynamometer*' directory and its sub folders.

If you have loaded Dyna Run V3 into the '*Local Drive C:*' then it will be located under the '*Program Files*' Folder.

### ***Dyna View V2 Stand alone Graph Viewing Software***

'*Dyna Run V3*' comes with a stand alone graph viewing software package, that can be included with a customers '*Dyno Runs*' so that they can open and print '*Dyno Runs*' from there own PC, if they are given there '*Dyno Runs*' on a CD-ROM.

The '*Dyna View Installer package*' Named '*DynaView\_Setup*' is located under 'My Computer' > 'Local Drive C:' > 'Program Files' > 'Dyna Pro Dynamometers' > 'Dyna View Software'. Copy this file to the customers CD-ROM with there '*Dyno Runs*'.

**NOTE** **DO NOT** install '*Dyna View V2*' onto your computer that is Running '*Dyna Run V3*'

### ***Dyna View V2 Customer Install***

1. Insert the CD-ROM, which you have burnt for them into there CD-ROM Drive.
2. Locate and double-click the '*DynaView Setup*' file from their CD-ROM Drive Directory. (Normally the d:\ Drive)
3. Follow the on-screen instructions to install '*DynaViewV2*'

Please note that '*Dyno Run Notes*' cannot be modified if opening '*Dyno Runs*' from the CD-ROM, If the customer wants to modify '*Run Notes*' etc they must copy the '*Dyno Runs*' onto there PC.

For further Help or Instructions please contact Dyna Pro Ltd



# Dyna Pro Driver Installation

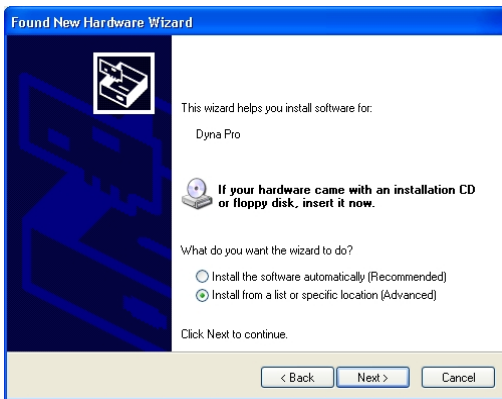
## Installing Dyna Run Drivers

Once the 'Dyna Run V3' software has been installed and the computer has been rebooted, connect the USB Cable from the Dynamometer to a spare USB port, and switch on the Dynamometer.

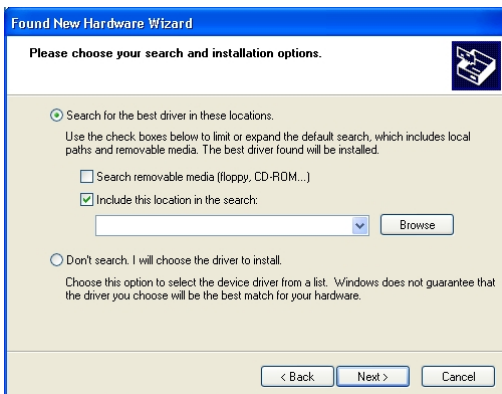
**NOTE** The USB cable **MUST NOT** be plugged into a USB multi-port Hub.



1. Windows will display a message of 'Found New Hardware' and will display a new window. Select from this window **No, Not this time** and click **Next**.



2. Select **Install from list or specific location (advanced)** and click **Next**.



3. **Search for the best driver in these locations** must be selected, and put a **Tick** in the check box for **Include this location in the search**.



4. Press the **Browse** button, and locate the '*Dyna Run V3*' CD-ROM, which will be under a folder of '*My Computer*' and press the '+' box next to it.

Locate the '*Drivers folder*' and press the '+' box next to it.

Left click with the mouse the '*Dyna Pro USB*' folder.

Press the '**OK**' button when finished.

Then press the **Next** button on the returning window.



5. Press the **Continue Anyway** button.

Driver Installation will now take place.



6. Press the **Finish** button.

Windows will then display a message that your '*Hardware is installed and ready to Run*'.

7. Drivers and software are now installed and are ready to run. Double-click on the '*Dyna Run V3*' icon on your Desktop.
8. Select the Model type, and accessories for your '*Dyna Pro Dynamometer*' and press **OK I have Finished**.

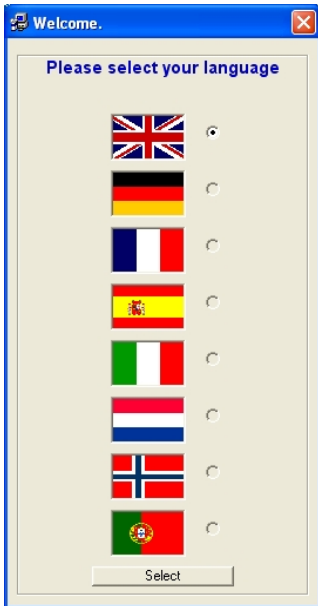
### Uninstalling Dyna Pro USB Drivers

1. Select **Start**
2. Click **Control Panel**.
3. Look for **Add/Remove Programs** and double-click.
4. Locate '*Dyna Pro USB Drivers*' and press the **Remove** Button.

## Starting Dyna Run V3 for the First Time

Double-click on the 'Dyna Run V3' desktop 'Icon' or from **Start > All Programs > Dyna Pro Dynamometers > Dyna Run V3**.

The following 'Welcome' dialog box will be displayed: -



The 'Welcome Language' dialog box allows the operator to 'Change the Language', that 'Dyna Run V3' will use.

**NOTE** This dialog box may appear different, and with different languages to what is show hear.

Press **Select** to 'Save' the language selection made, the 'Dyna Pro System Selection' dialog menu will then be displayed.



### CAUTION!

This dialog menu controls your Dynamometers parameters and functions, please carefully select the options of your Dynamometer Model, and Dynamometer options.

If in any doubt please contact Dyna Pro Ltd or your appointed agent.

Press **OK – I have finished** to setup your Dynamometer.

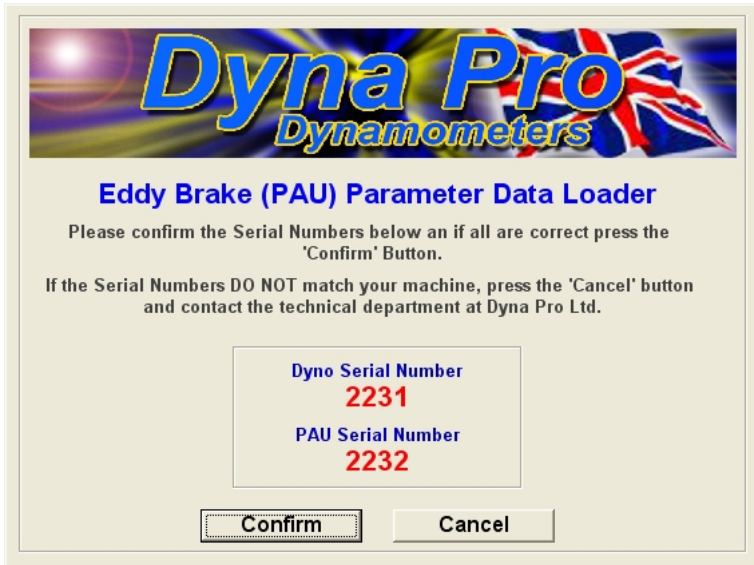
If you have a 'Standard Inertia Only' Dynamometer then you will taken strait to the 'Make Run Screen', Dynamometer installation is now complete.

If you have a 'LC' or 'Load-Cell' type machine then the following message box will be displayed.



Please read and understand the message box displayed, then press the **OK** button.

Insert the '*PAU Parameter Files*' disk into your CD-Rom drive, then wait for the following dialog box.

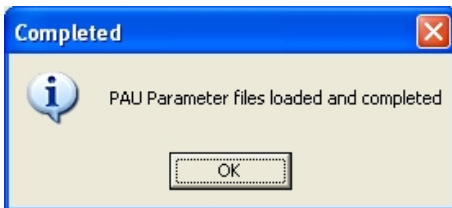


Check that your '*Dyno Serial Number*' and '*PAU Serial Number*' displayed in the dialog box match the serial numbers on your machine.

If the serial numbers are confirmed as correct press the **Confirm** button.

If the serial numbers are incorrect then please contact Dyna Pro Ltd or your appointed agent, and press the **Cancel** button

Once you have pressed the **Confirm** button the following message will be displayed.



Your Dynamometer installation is now complete.

Double-click on the '*Dyna Run V3*' desktop '*Icon*' or from **Start > All Programs > Dyna Pro Dynamometers > Dyna Run V3**, to start 'Dyna Run V3'

Compiled Date 1<sup>st</sup> January 2011

Dyna Pro Dynamometers Ltd reserves the right to change specifications without notice.

© 2011 Dyna Pro Dynamometers Ltd. All rights reserved.

[www.dynapro.co.uk](http://www.dynapro.co.uk)

*Dyna Pro Dynamometers Ltd    United Kingdom*

*Tel UK: +44 (0) 8000 4321 68*

*Tel Int: +44 (0) 1256 363063*

E-mail [support@dynapro.co.uk](mailto:support@dynapro.co.uk)